



48ZX200 – Optional

Maximum output	200 m ³ /h	(261 yd ³ /h)
Concrete cylinder	Ø280 × 2100mm	(11" × 83")
Stroke per minute	25.6	
Concrete pressure(rod)	87.5 bar	(1270 psi)
S-tube	Ø220 × Ø180	(9" × 7")
Hydraulic pump	Kawasaki K3V180DT	(Rexroth A20VLO190)

Boom specifications

Vertical reach	47.1 M	(154' 6")
Horizontal reach	43.3 M	(142')
Reach from front of truck	40.2 M	(132')
Unfolding height	10.6 M	(34' 8")
Section articulation	92° / 180° / 225° / 180° / 210°	
Rotation	370°	
Delivery line	125 mm	(5")
Proportional boom	Yes	
End hose length	4 M	(13')
Outrigger spread-front	8.87 M	(29' 1")
Outrigger spread-rear	10.1 M	(33')
Max outrigger weight	33,500 kg	(73950 lbs)

Pump specifications

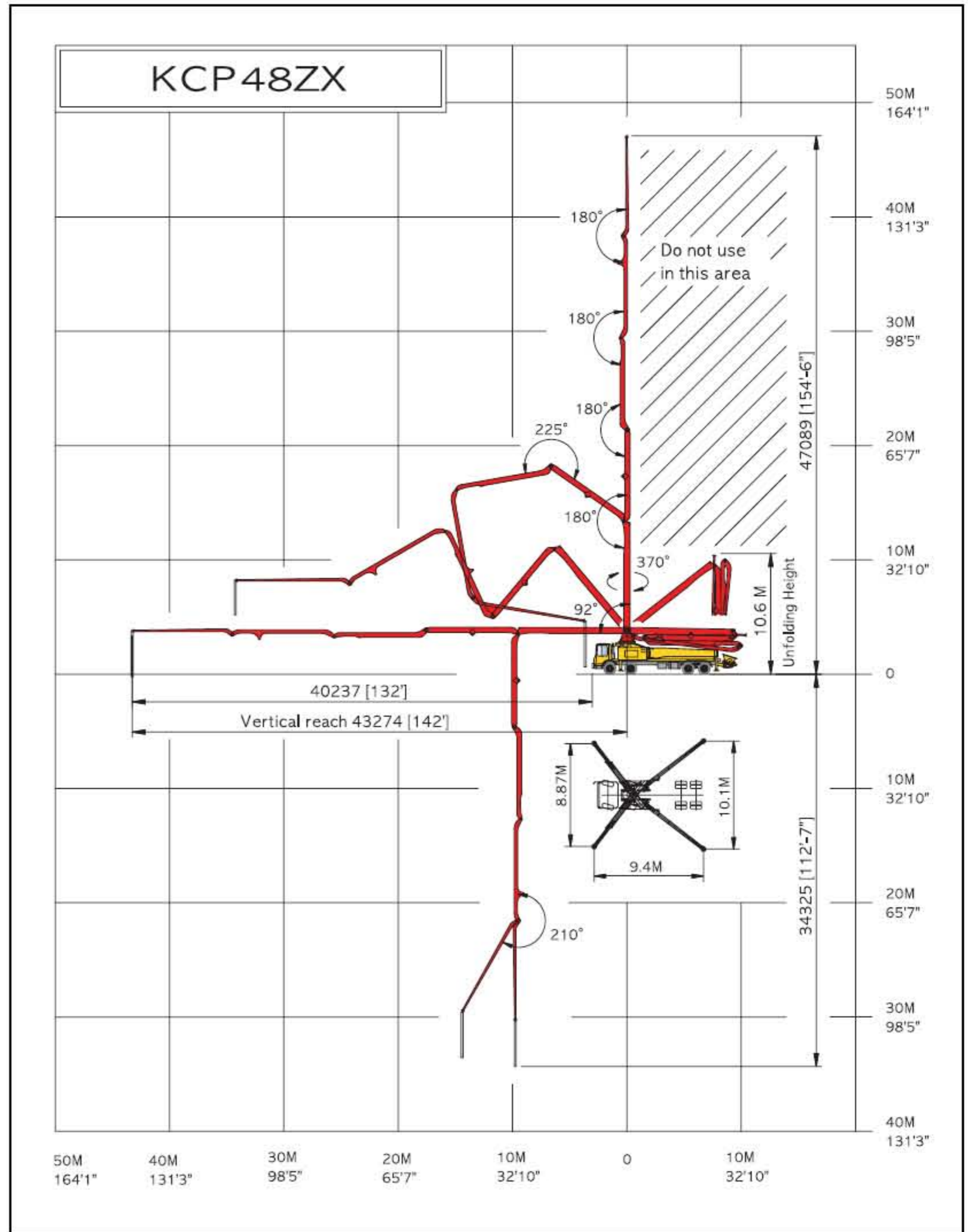
Maximum output	170 m ³ /h	(222 yd ³ /h)
Concrete cylinder	Ø230 × 2100mm	(9" × 83")
Stroke per minute	32	
Concrete pressure(rod)	72 bar	(1044 psi)
Hopper capacity	0.6 m ³	(21 ft ³)
S-tube	Ø200 × Ø180	(8" × 7")
Hydraulic pump	Kawasaki K3V140DT	(Rexroth A11VO260)
Cycling system	Hydraulic with manual overrides	
Max aggregate size	60 mm	(2 1/2")

※maximum theoretical values listed.

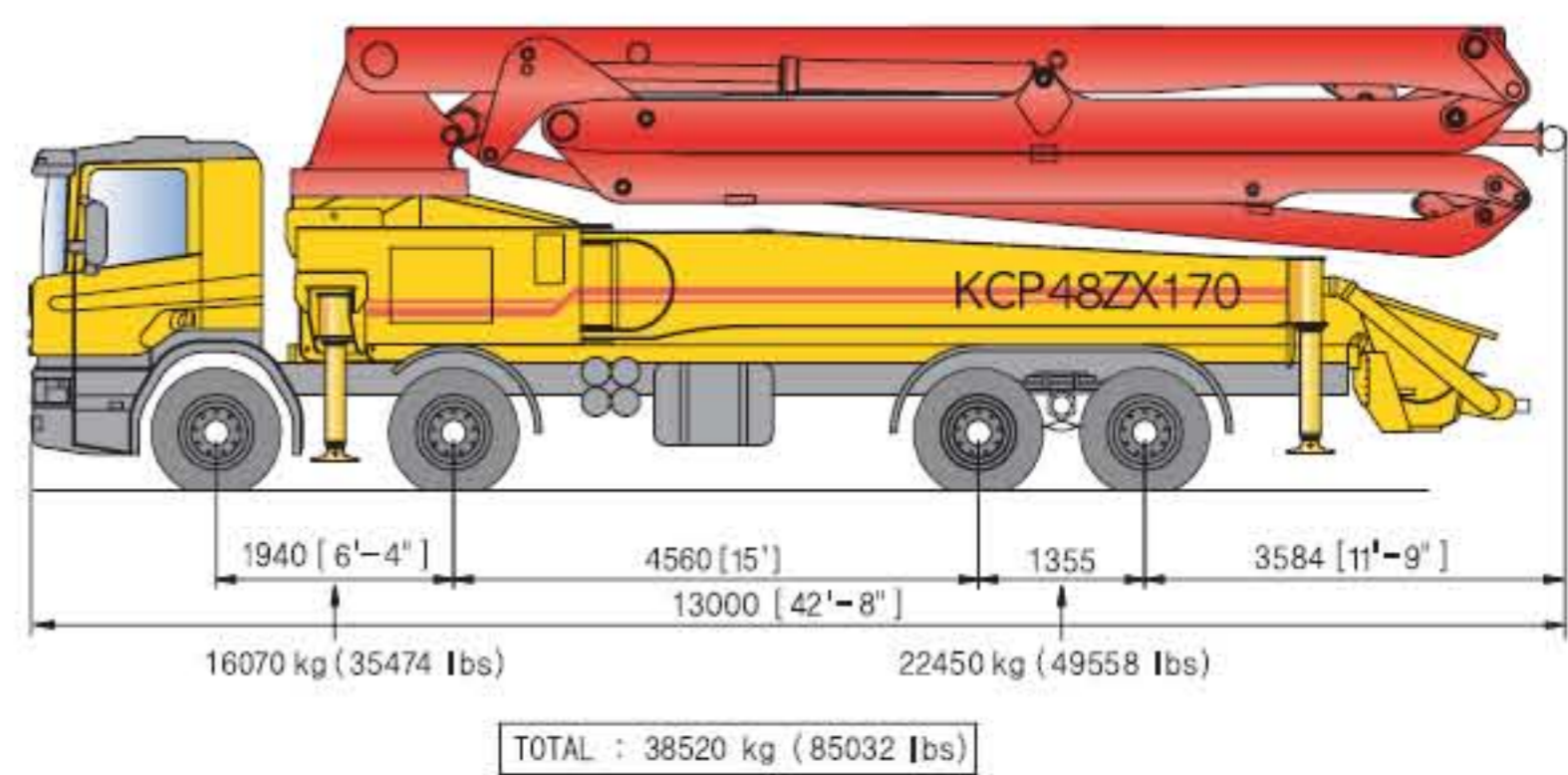
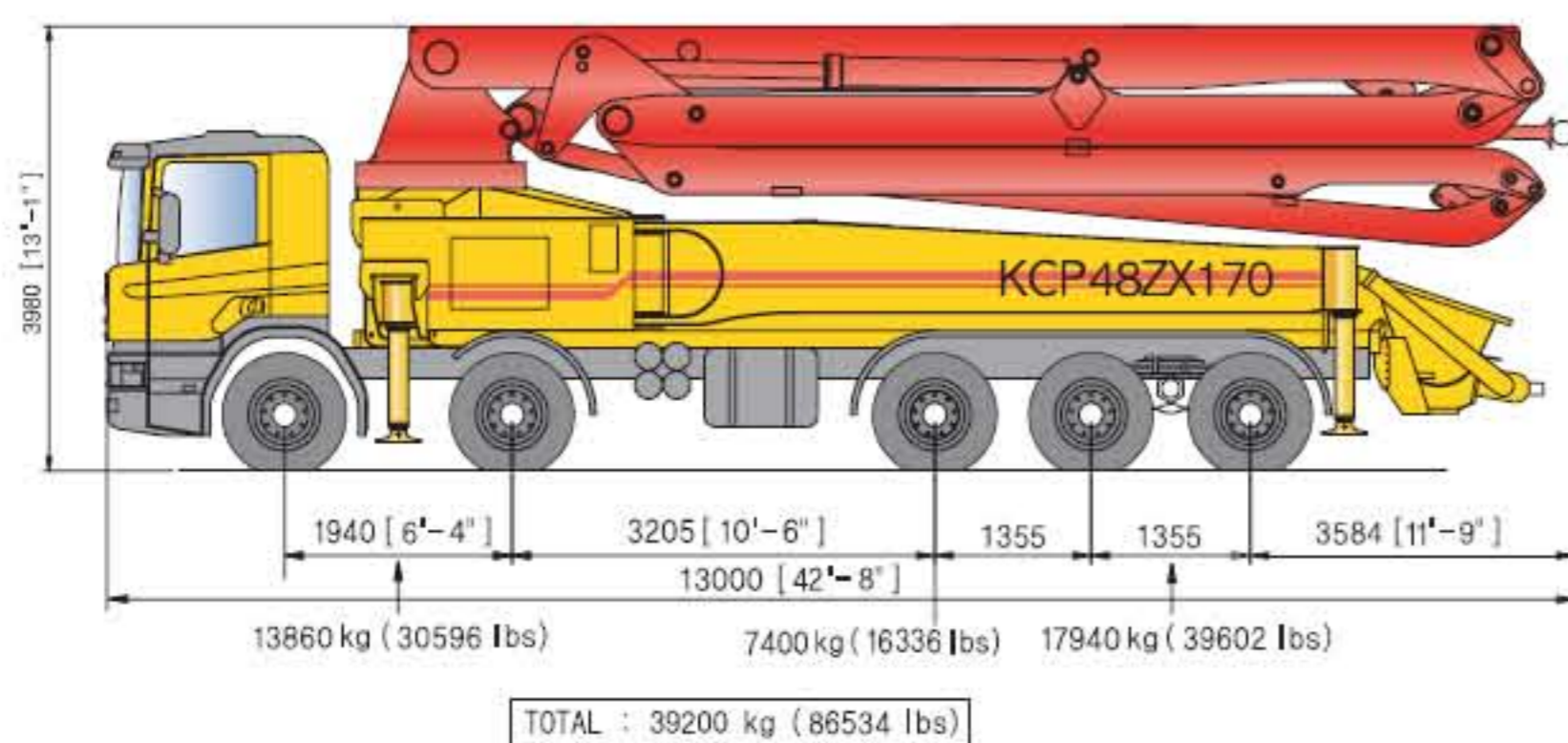
Truck mounted specifications

Available SCANIA, VOLVO, MERCEDES BENZ, MAN, IVECO, DAF, MAZ, ASTRA, MR MACK, FREIGHTLINER, HYUNDAI, DAEWOO,...

Working diagram



Weight diagram



※photos and drawings are for illustrative purpose only.
 ※dimension will vary with different truck makes, models and specifications.

※right to make technical amendments reserved.